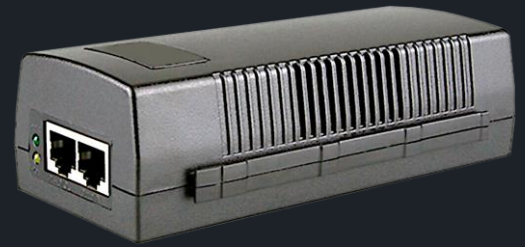




# PJ-11AT

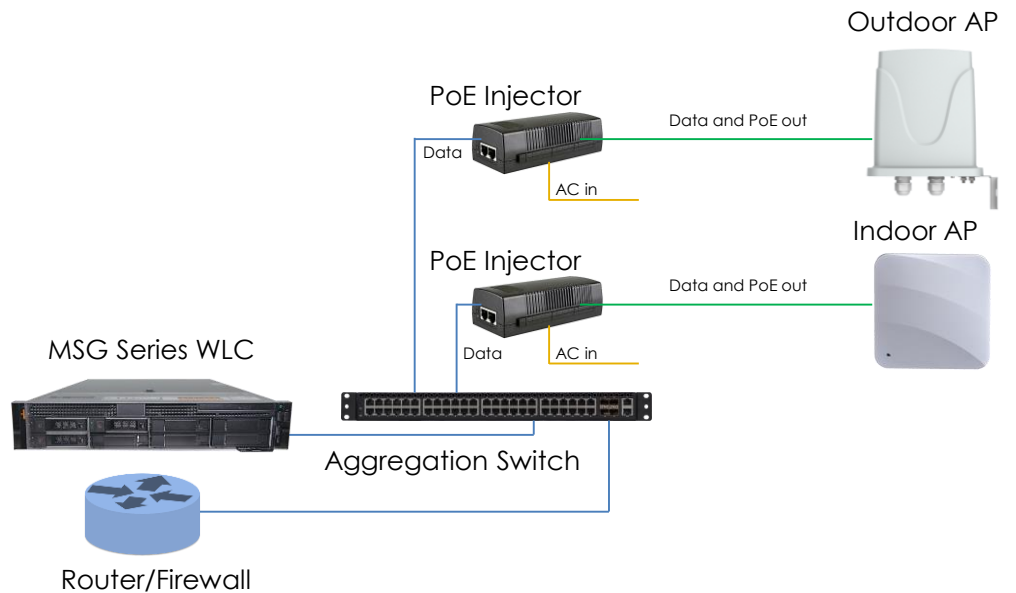
## POE INJECTOR



### Features

- o IEEE 802.3AF/AT COMPLIANT
- o POE POWER UP TO 30W
- o SAFE AND RELIABLE POWER TO WLAN ACCESS POINTS
- o SAFE ON LOW POWER DEVICES
- o 10/100/1000BASE-T LAN
- o EASY INSTALLATION

### 802.3af/at Compliant POE Injector



### Description

The UTStarcom's PJ-11AT is a Power over Ethernet (PoE) Injector fully compliant with IEEE 802.3af/at standards. The product provides remote power to various IEEE802.3af/at PoE compliant devices, such as wireless access points, pan-tilt-zoom (PTZ) IP cameras and videophones, and thus helps to expand your network beyond limits set by site power availability.

The PJ-11AT is equipped with one Ethernet Input (data only) port and one Output (data + power) port that is used to deliver both data and power to a PoE device, providing great flexibility in installation and simplifying site acquisition in various use cases.

The product supports 10/100Base-T networking devices as well as high-performance 1000Base-T devices,

such as Wireless Access Points, and can be used in green-field deployments, or as an upgrade to existing non-PoE networks enabling them to instantly support modern PoE devices without the need to replace existing network infrastructure.

See more carrier-class solutions online at [www.utstar.com](http://www.utstar.com)

[WWW.UTSTAR.COM](http://WWW.UTSTAR.COM)

**UTStarcom, Inc.**

1732 North First Street, Suite 220  
San Jose, California 95112, USA

T: +1 408 453 4557

F: +1 408 453 4046

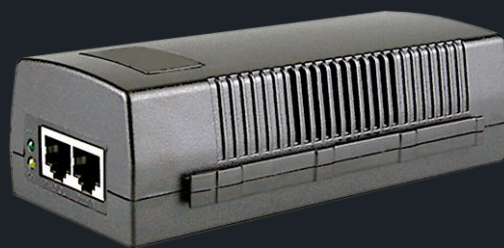


A global telecom infrastructure provider of innovative carrier-class broadband transport and access solutions.

© 2018 UTStarcom, Inc.

# PJ-11AT

## POE INJECTOR



### Product Details

### Technical Specifications

#### REGULATORY COMPLIANCE

CE,FCC,RoHS

#### ORDERING INFORMATION

Product name	Product description
PJ-01AT	32W max, PoE Injector, AC 100-240V 50/60Hz

#### INTERFACE

1 PoE Port at 10/100/1000Mbps  
1 Uplink Port at 10/100/1000Mbps

#### STANDARDS AND PROTOCOLS

IEEE 802.3  
IEEE802.3i  
IEEE 802.3u  
IEEE 802.3af  
IEEE 802.3at

#### PoE

<b>PoE Standard</b>	IEEE802.3at
<b>Input</b>	AC 100V-240V~50-60HZ
<b>PoE Power Output</b>	48~56V/30W
<b>PoE Power Supply Type</b>	1/2(+)/3/6(-), Mode-A, End-Span

#### NETWORK MEDIA

10Base-T CAT: 3, 4, 5 UTP (≤100m)  
100Base-TX: CAT 5 UTP (≤100m)  
1000Base-T: CAT (≤100m)

#### ENVIRONMENTAL

<b>Operation temperature</b>	0°C~40°C (32°F~104°F)
<b>Storage temperature</b>	-40°C~70°C (-40°F~158°F)
<b>Operation humidity</b>	10%~90% non-condensing
<b>Storage humidity</b>	5%~90% non-condensing

\* Denotes features available in a future release.

Please note the information contained herein is for informational purposes only. Technical claims listed depend on a series of technical assumptions. Your experience with these products may differ if you operate the products in an environment, which is different from the technical assumptions. UTStarcom reserves the right to modify these specifications without prior notice. UTStarcom makes no warranties, express or implied, on the information contained in this document.